

AN AVERNA HOMES PARTNERSHIP
A SIGHT TO BEHOLD
-

The synergy between Averna Homes and West Coast Elevators is the epitome of design. See how their combined vision of luxury and functionality came to life within the walls of Villa Mia, an award-winning South Perth showhome.



Location
6 Colles St, South Perth

Installation
New Build

Share

Client
Averna Homes

Elevator design
Sovereign Residential Lift

A forever home has the potential to be something spectacular when you combine luxury with accessibility. Find out how the priority placement of our Sovereign Lift in this award South Perth showhome delivered nothing short of show-stopping results with our West Coast Elevators - Averna Homes collaboration.



Villa award-winning Villa Mia by Averna Homes is a sight to behold. As a showhome for Averna Homes, Villa Mia has been designed to be the epitome of luxury. Every element is carefully crafted to the vision of Paul Spatola, Averna Designer and General Manager, as he visualised how his own young family would want to use the space.

Accessibility and practicality were important factors in Villa Mia's creation. An elevator stretching across three levels would provide a sense of ease and usability for the owners. After all, luxury shouldn't just look good, it should be easy to use and effortless in application. So a collaboration with West Coast Elevators seemed like the perfect fit for this stunning \$2.3 million dollar build. Together we created an innovative home where residents would not only enjoy the lifestyle but also the journey between floors.

REQUEST A FREE QUOTE

CONSIDERED FROM THE OUTSET
-

When crafting a luxury home, there's so much more to consider than visual beauty. How a home flows from room to room and the ease of accessibility between floors is key to adding a touch of elegance to how someone lives. What brings efficiency and connectivity to an average day? Whether bringing groceries from the basement to the kitchen or moving from the living space to the bedrooms, it's all wrapped up in the detail of the design. And an important element of this is the precise positioning of the elevator.

To complement the design, the elevator was placed in the corner of the home. Being a quiet feature it acts as an accent, unobtrusive, allowing speedy movement between the three stories. No matter what floor you're on, getting around feels easy and hassle-free.

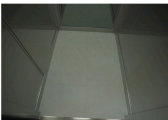
This starts at the basement where the elevator is situated in the underground car park. Travelling up to the ground floor with one to beautiful street views peering through the floating staircase. This is the centre of the action, with the kitchen, cinema room, living space and pool all accessible at the turn of a corner. The top-level elevator access is just as strikingly placed, opening up at the top of the stair can revealing the full beauty of the ceiling: high windows and providing central access to the top floor bedrooms, so every family member is only a step away from a good night's sleep.



STUNNING CONFIDENT COHESION
-

The design elements and features used to bring this luxe home to life were also highly considered in the integration of our West Coast elevator. The designer wanted a modern sophisticated feel running throughout the home. To create this vision, innovative palette of natural materials and soft tones were utilised, complemented by the natural materials and forward-thinking design elements from Japan and custom made products like the sleek, advanced range hood.

Our elevator design needs to have beautiful elements throughout the home. The smoked mirror tint on our Sovereign elevator doors and full-height smoked mirror in the lift cabin match the smoked mirror and glassbacks throughout the house. Intelligently, the lift throughout the home was integrated into the lift's floor - a feature that maintains the feeling of luxury as passengers transition from living to travelling between floors. Not only this, each lift perfectly lined up with the elevator and each floor entrance to create a seamlessly confident cohesion.



SYNERGY HARNESSSED BY ETHOS
-

Working with Averna from the design stages was a seamless process where everything went exactly how it was supposed to. The beauty of this working relationship is both Averna and West Coast Elevators live by the same ethos. It's a genuine approach to what we do, an "above and beyond" attitude that comes naturally, and the emphasis on nurturing clients through every step of the design and building process that makes every installation be brought to life perfectly.

CABIN WALL

FLOOR

LIGHTING

LANDING DOOR



ELEVATOR FEATURES
-

It's the little things that count.



CABIN WALL
Aluminium swing doors with full-height integrated handles and painted in a matte black.



CABIN FLOOR
Brushed-matte luxury stainless-steel walls on two sides.



CABIN WALLS
Full-height smoked mirror. Creating a sense of space within the cabin.



CEILING
Designer lighting (diamond design).



FLOOR
Custom stone tiling.